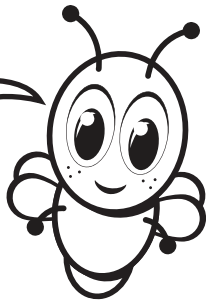


# Blinky's Family Challenge

God welcomes everybody ... *to be a part of His Church!*

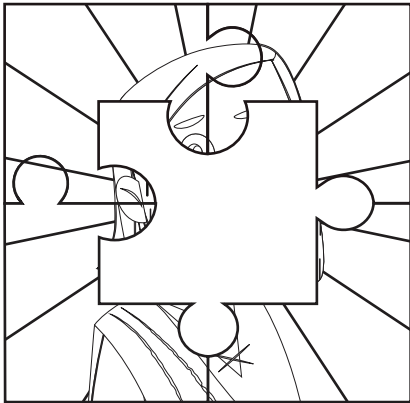


## Puzzle Part

When you trust and follow Jesus, you have a special place in God's family. You fit into God's Church like a puzzle piece fits into a puzzle.

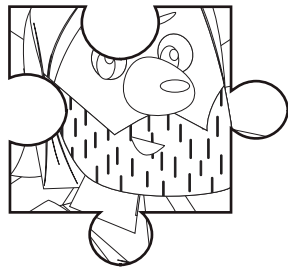
### You'll Need

- Scissors



### Directions

1. Cut out the puzzle piece below.
2. Take turns putting the puzzle piece in its place and say, "I fit in God's Church."



## Review Time!

### Say With Me *Ages 2-3*

1. *Say Together:* **God welcomes me!**
2. *Say Together:* **I fit in God's Church!**

### Q&A *Ages 4-Kindergarten*

1. **Do you fit in God's Church?** Yes
2. **When you trust and follow Jesus, whose family has a special place for you?** *God's family*



Lead your family through the Bible Plan *Everybody's Welcome* on the YouVersion Bible App.

[www.bible.com](http://www.bible.com)

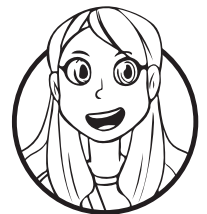
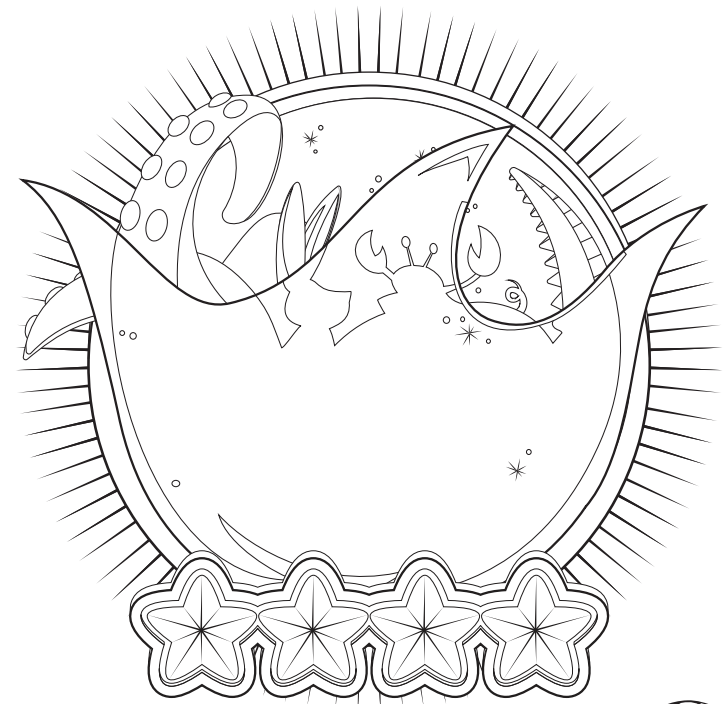


[www.lifekids.tv](http://www.lifekids.tv)

# Everybody's Welcome

## Peter's vision and Cornelius

### Week Four



Emily

*Tell your family what's in my Adventure Bag!*

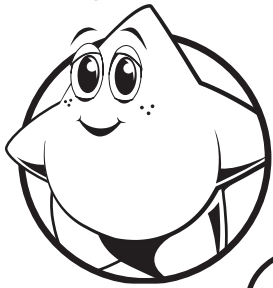


Interact with God's Word through the Bible App for Kids, activities, videos, coloring sheets, parent resources, and more!  
[www.BibleAppForKids.com](http://www.BibleAppForKids.com)



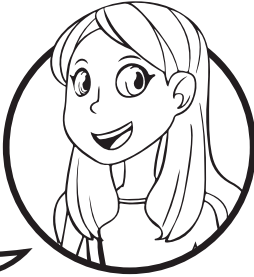
Follow LifeKids to sing along with some of your kid's favorite songs! [go2.lc/lifekidsmusic](http://go2.lc/lifekidsmusic)

Shine



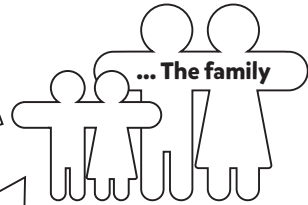
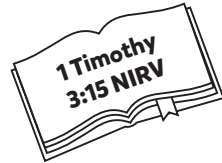
**Question:**  
Hey friends!  
**What is the Church?**

Emily



**Answer:** Say it with me!  
**The Church is God's family!**

Say the Bible verse with me!



... The family



Guy the Bible Guy

The puzzle, globe, and welcome mat remind me that everybody has a place in God's family!

Put a sticker on each Picture Pass.

